



# KOMPOSISI BATANG

WEEK 10

Batang adalah sebuah objek yang memiliki:  
Panjang, lebar, tinggi dan volume.

Tentunya yang dominan adalah sisi panjangnya.





# Batang sebagai modul

Segala benda dan makhluk hidup di dunia ini dibentuk dari kumpulan unsur2 (kimia atau alami). Unsur pembentuk ini dapat kita samakan sebagai MODUL.

Dalam prinsip seni dan desain, kumpulan dari modul sangat berpotensi untuk kita atur atau komposisikan menjadi produk-karya yang memiliki nilai estetika.



# PRINSIP

## **RUPA DASAR 3 DIMENSI,**

1. Irama
2. Kesatuan atau Unity
3. Dominasi atau penekanan
4. Keseimbangan
5. Proporsi atau perbandingan
6. Kesederhanaan atau Kejelasan



# TUGAS

Rangkailah modul-modul batang menjadi bentuk baru dan mengandung prinsip seni/desain.

Batang tersebut dapat berasal dari bahan apapun (alam atau buatan), kalian diminta untuk **eksplorasi material dan berani mengemukakan pendapat.**

# BATASAN TEKNIS

Jenis batang yang tidak boleh dipakai adalah:

1. Sedotan
2. Sumpit
3. Stick kayu es

Panjang batang: 8 -18 cm

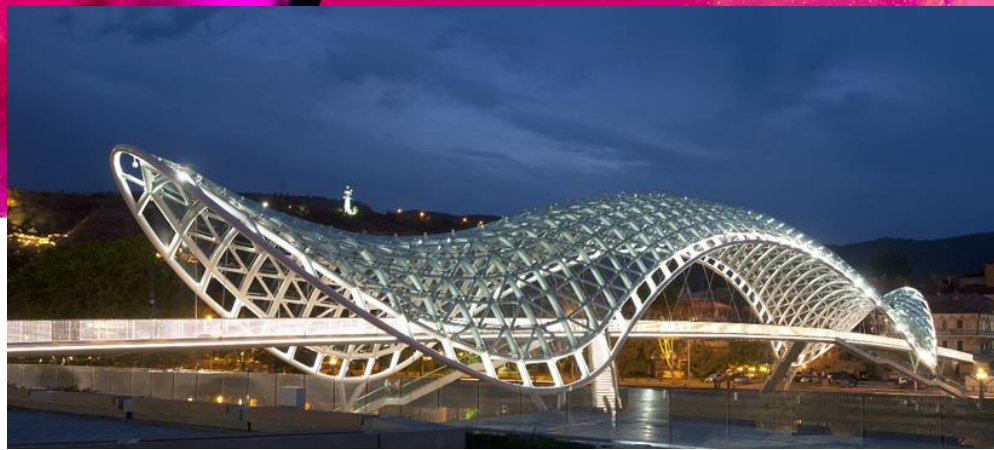
Sifat batang: Statis/solid/keras

Batang boleh diberi warna dengan cat

Dimensi karya merujuk pada alas: 40x40cm

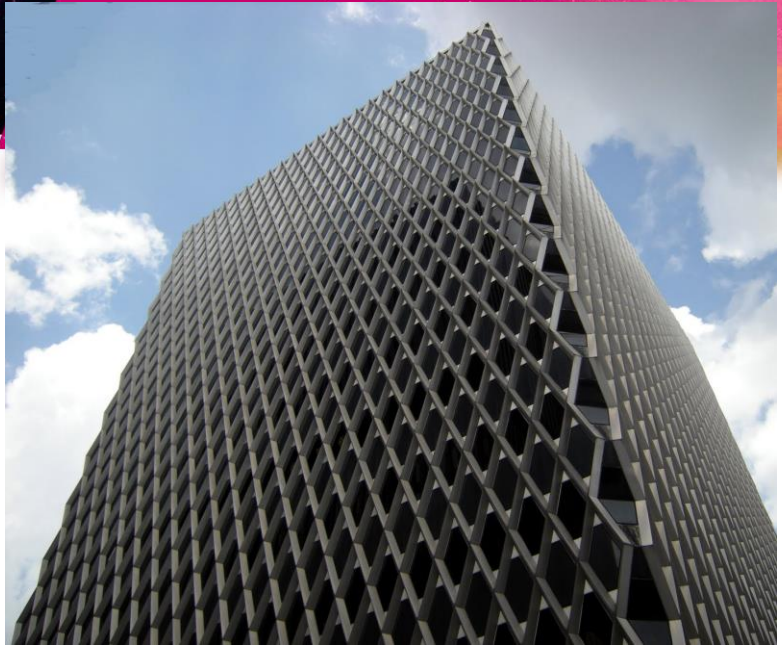








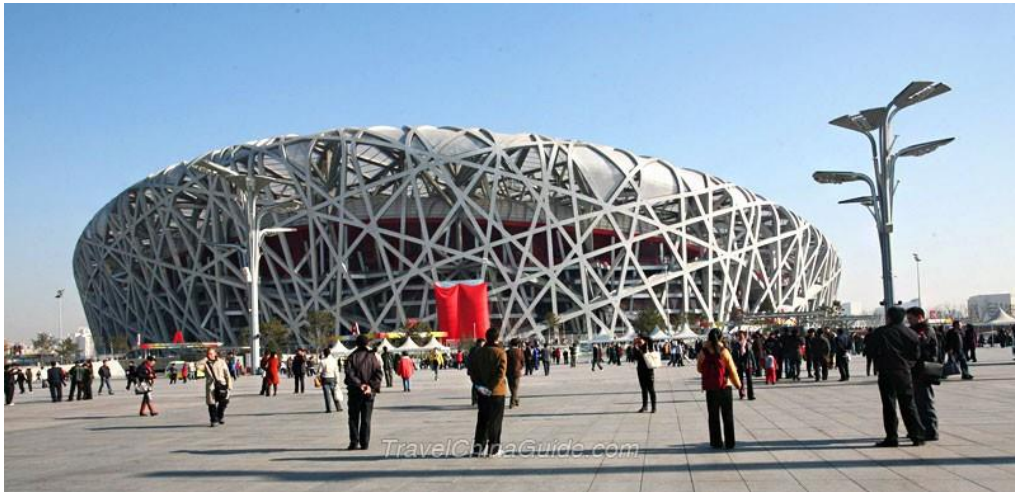










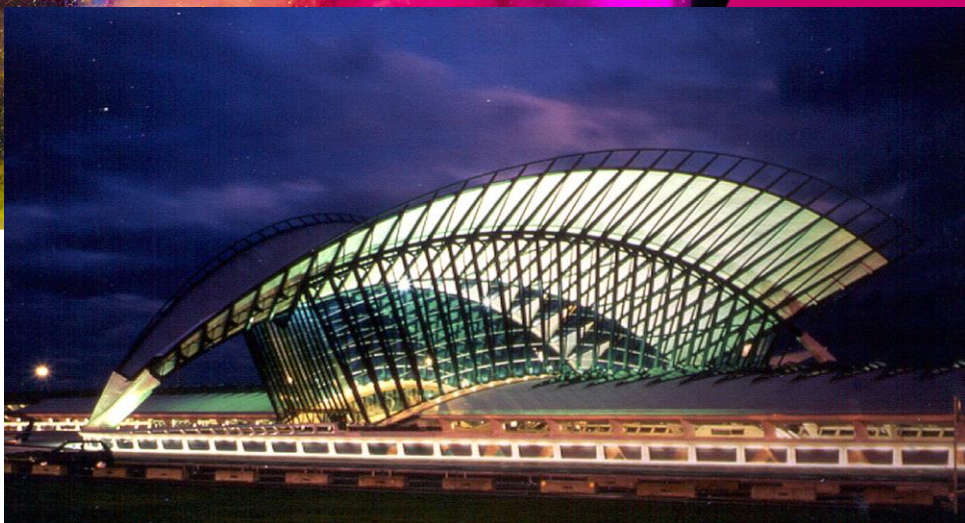








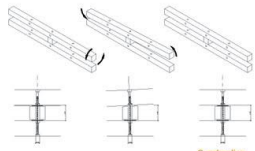




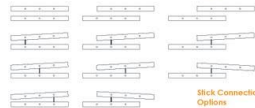
# GATHERING

For forty years, the Israelis wandered the desert. They found rest from their wandering, connecting with one another in hidden built forms and trees. The city is similar. We wander to connect and get lost in its chaos. In the city we search for our own trees and our own temporary moments of urban intimacy. And whether wandering through the desert for forty years or through the city for a day, if people share needs, the task is to find an aid for this need from transience, and this project explores what a temporary structure can be in the urban environment through a non-fixed design.

The relationship of transience to the non-fixed system is in how the singular pieces move towards certain attraction points in the given conditions. The result is a collection of interconnected structures. As the sticks shift, they create a specific entry and space of occupation for the user. Now the movement and body of the user have a direct interaction with the structure itself. The aggregation of the branches and the degree range of enclosure also allows for movement, creating a relation of porosity. The angle and flow of the sticks makes the reflecting road during the day and at night guides the viewer's eyes up to the stars. This process creates a phenomenological space - through its randomness, light is manipulated and it is through this intangible material that a space becomes dynamic, reacting to the changing light.



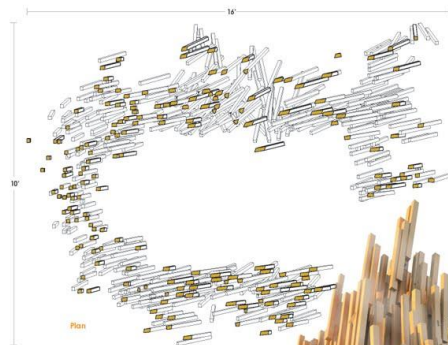
Construction Detail



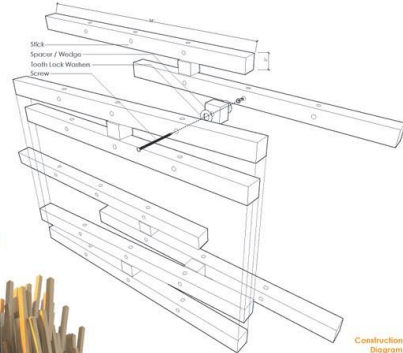
Stick Connection Options



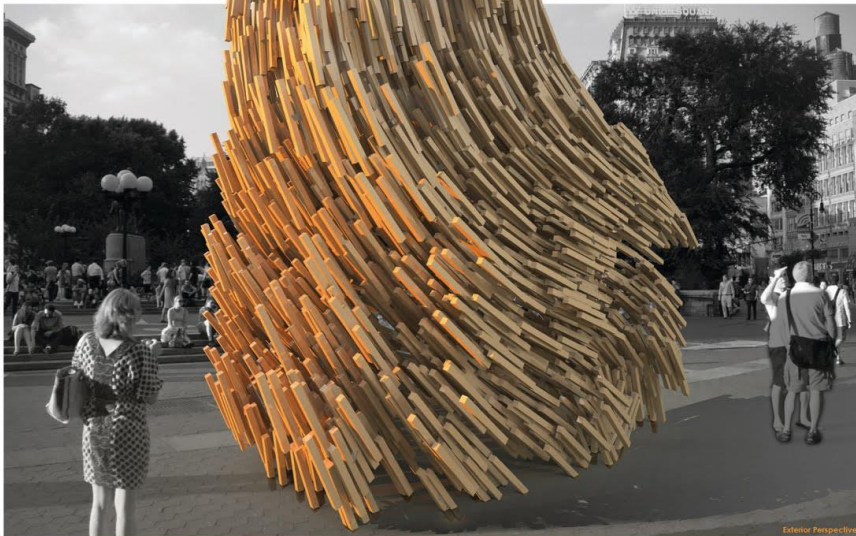
Interior View



Plan



Construction Diagram



Exterior Perspective









